

# HRP

**HEPFNER RACING PRODUCTS**



**INDUSTRY LEADING KAWASAKI MULE CONVERSIONS**  
**CUSTOM CONVERSIONS - ADD ONS - ACCESSORIES - UPDATES**



[hrpracing.com](http://hrpracing.com)



# HRP'S INDUSTRY LEADING KAWASAKI MULE CONVERSIONS

## Keeping Your Race Team On the Right Track Since 2002



**All Mules are Custom Built from the Front Push Bumper to the Personalized Rear Name Plate. Conversions can be Outfitted with Many Options from Air Compressors to Generators, as well as Many Different Racks to Organize Your Tools & Spare Parts**





# TABLE OF CONTENTS

## GENUINE HRP KAWASAKI MULE CONVERSIONS

Evolution of the Kawasaki Mule	3	Genuine HRP Kawasaki Mule Conversions	4
--------------------------------	---	---------------------------------------	---

## HRP LARGE FORMAT CONVERSIONS

HRP Large Format Mule Conversions	5 - 6
-----------------------------------	-------

## HRP SMALL FORMAT CONVERSIONS

HRP Small Format Mule Conversion	7
----------------------------------	---

## HRP MULE CONVERSION OPTIONS, ADD-ONS, & ACCESSORIES

Small Rear Side Cabinet Options	8	Nose Wing Mounts	18
Large Front Side Cabinet Options	9 - 10	Axle Racks, Clamp Rings, & Rear View Mirrors	19
Cabinet/Wall Mount Radius Rod Racks	11	Upper Decks & Options	20
Cabinet/Wall Mount Shock Racks & Spare Studs	12	Push Bars & Options; Shock Kits & Brackets	21
Rear Mule Options	13 - 14	Jack Hangers, Ladders, Hoops, & Battery Upgrades	22
CTECH Drawer Stacks, Replacements, & Add-Ons	15	Fenders, Skirts, Brackets, & Trailers	23
Drawer Organization	16	Wheels, Covers, Brackets, Tubes, & Tires	24
Painted Hoods, Jug Holder, & Tie Rod Rack	17	Tool & Bolt On Holders	25 - 26





## COLOR & SERIES COMPATIBILITY

The Color of a Part Number Indicates its Series Compatibility. When Outfitting or Building your HRP Mule Conversion, Be Sure to Choose the Products that Correspond to your Chosen Series

Color	Example	Format Compatibility
Blue	HRP000	BOTH Large & Small Format
Red	HRP000	ONLY Large Format
Purple	HRP000	ONLY Small Format
Black	HRP000	Other



## HRP LARGE FORMAT CONVERSION

1990 - 2000 10" Wheel	2001 - 2008 10" Wheel	2009 - Present 10" Wheel
2500 Series - 2 x 4	3000 Series - 2 x 4	4000 Series - 2 x 4
2510 Series - 4 x 4	3010 Series - 4 x 4	4010 Series - 4 x 4

### LARGE FORMAT SPECS:

- 617 CC
- 4 Stroke 2 Cylinder
- OHV Liquid Cooled
- 1310# Loaded Capacity
- 800# Bed Capacity
- Current Models are Fuel Injected



## HRP SMALL FORMAT CONVERSION

2003 - 2004 10" Wheel	2005 - 2016 10" Wheel	2019 - Present 10" Wheel	2019 - Present 12" Wheel
500 Series - 2 x 4	600 Series - 2 x 4	SX Series - 2 x 4	N/A
550 Series - 4 x 4	610 Series - 4 x 4	SX Series - 4 x 4	SX - XL Series - 4 x 4

### SMALL FORMAT SPECS:

- 401 CC
- 4 Stroke Single Cylinder
- OHV Air Cooled
- 915# Loaded Capacity
- 400# Bed Capacity
- Current Models are Fuel Injected





# GENUINE HRP KAWASAKI MULE CONVERSIONS

4





**LARGE FORMAT CONVERSION: FITS 2500, 2510, 3000, 3010, 4000, & 4010 SERIES**

## ENCLOSED DRAWER STACK

HRP6933-A



### SPECS:

- **Dimensions:** 55.25" Long x 54" Wide x 48" Tall
- **Dry Weight Stock:** 1400#
- **Weight Dry HRP Conversion:** 2000#
- **Weight Fully Loaded Approx:** 2500#
- **Standard Height with Standard Turf Tire:** 73.50"

### STANDARD CONVERSION INCLUDES:

- Enclosed CTECH Drawers
- 30" & 20" Double Drawer Stack
- Top Deck Over Cabinet
- HRP Name Plate
- Side Cabinet Doors
- Adjustable Shelves
- Rear Fenders & Skirts



# LARGE FORMAT CONVERSION - EXPOSED DRAWERS

6

**LARGE FORMAT CONVERSION: FITS 2500, 2510, 3000, 3010, 4000, & 4010 SERIES**

## EXPOSED DRAWER STACK

HRP6932



### SPECS:

- **Dimensions:** 55.25" Long x 54" Wide x 48" Tall
- **Dry Weight Stock:** 1400#
- **Weight Dry HRP Conversion:** 2000#
- **Weight Fully Loaded Approx:** 2500#
- **Standard Height with Standard Turf Tire:** 73.50"

### STANDARD CONVERSION INCLUDES:

- Exposed CTECH Drawers
- 30" & 20" Double Drawer Stack
- Top Deck Over Cabinet
- HRP Name Plate
- Side Cabinet Doors
- Adjustable Shelves
- Rear Fenders & Skirts





1

# SMALL FORMAT CONVERSION - EXPOSED DRAWERS

**SMALL FORMAT CONVERSION: FITS 550, 600, SX, & SX - XC SERIES**

## EXPOSED DRAWER STACK

HRP6934-A



### SPECS:

- **Dimensions:** 41.75" Long x 49.50" Wide x 42.5" Tall
- **Dry Weight Stock:** 1000#
- **Weight Dry HRP Conversion:** 1400#
- **Weight Fully Loaded Approx:** 1750#
- **Standard Height with Standard Turf Tire:** 73.50"

### STANDARD CONVERSION INCLUDES:

- Exposed CTECH Drawers
- 40" Single Drawer Stack
- Top Deck Over Cabinet
- HRP Name Plate
- Side Cabinet Doors
- Adjustable Shelves
- Rear Fenders & Skirts



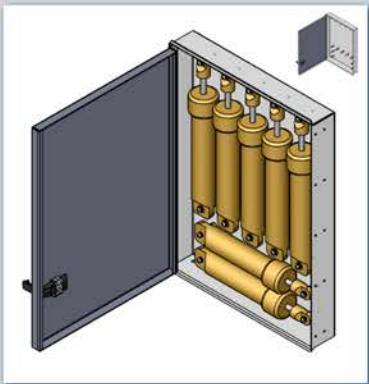


## SMALL REAR SIDE CABINET OPTIONS

Choose 2 Configurations:

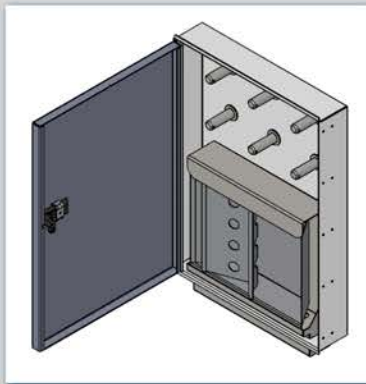
- 1 Driver Side & 1 Passenger Side

Part No.	Description
<b>Swing Open Cabinets</b>	
HRP6926-5	5 Position Shock
HRP6926-4SS	4 Position Super Shock
HRP6926-7	7 Position Shock
HRP6926-GEAR	6 Position Gear Cabinet & Tray
HRP6926-AC	Aerosol Can Cabinet
HRP6926-AC-600	New Aerosol Can Cabinet
HRP6926-ET	Empty Cabinet
<b>Fold Down Cabinets</b>	
HRP6926-FD-DEEP	4 Position Shock Cabinet
HRP6925	Empty Fold Down Work Tray



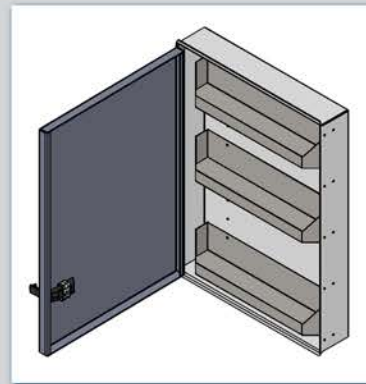
**7 Position Shock Cabinet**

- Shocks are NOT Included



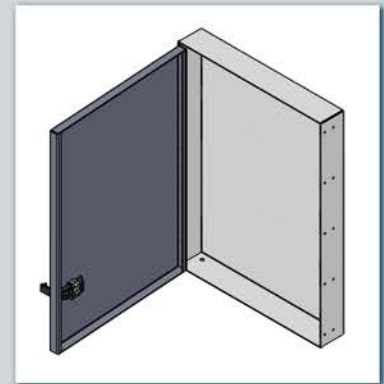
**Gear & Tray Cabinet**

- Holds 3 Gear Sets



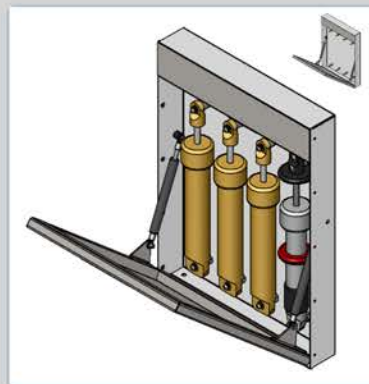
**Aerosol Can Cabinet**

- Holds Up to 25.0" Dia. Container



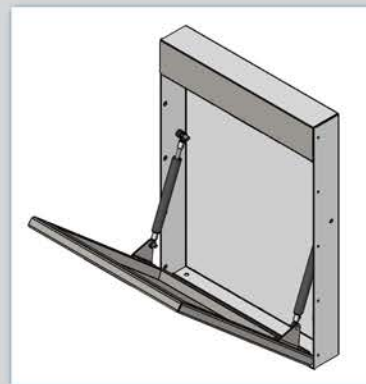
**Empty Cabinet**

- To Be Outfitted by Customer



**4 Position Shock Cabinet**

- Shocks are NOT Included



**Empty Work Tray**

## CABINET DOOR PROP

2 Needed for Fold Down Door

HRP6966-155





## ADJUSTABLE SHELVES

2 Sets Included With Conversion  
- (2 Shelves & 2 Brackets)



Part No.	Description
<b>Large Format</b>	
<b>HRP6956-D1</b>	Driver Side Shelf
<b>HRP6956-P1</b>	Passenger Side Shelf
<b>HRP6956-P2</b>	Passenger Side Torsion Bar Rack
<b>Small Format</b>	
<b>HRP6956-600-A</b>	Universal Side Shelf Standard Deep
<b>HRP6956-600-B</b>	Universal Side Torsion Bar Rack
<b>HRP6956-600-C</b>	Universal Side Shallow Torsion Bar Rack



## TORSION BAR RACKS

Fits up to 30" Bars

Part No.	Description
<b>HRP6959</b>	15 Spots
<b>HRP6959-600</b>	9 Spots



## AEROSOL TRAYS

Universal Side Shelf Kits

Width	14.25" Long	17.25" Long
2.50"	<a href="#">HRP6964-250-14</a>	<a href="#">HRP6964-250-17</a>
3.00"	<a href="#">HRP6964-300-14</a>	<a href="#">HRP6964-300-17</a>
3.25"	<a href="#">HRP6964-325-14</a>	<a href="#">HRP6964-325-17</a>
3.50"	<a href="#">HRP6964-350-14</a>	<a href="#">HRP6964-350-17</a>
4.00"	<a href="#">HRP6964-400-14</a>	<a href="#">HRP6964-400-17</a>



## WHEEL WRENCH RACK BRACKETS

Fits Most Wheel Wrenches  
- Upper & Lower Bracket Sold Separately

Part No.	Description
<b>HRP6971-101</b>	Upper Bracket
<b>HRP6971-102</b>	Lower Bracket



Upper Bracket



Lower Bracket





# LARGE FRONT SIDE CABINET OPTIONS

10

GENERAC

## 120 VOLT GENERATOR, AIR KIT, & TRAY

Provides Power for Air Compressor, Battery Chargers, & Lights  
- Shelf Mount Tray Sold Separately

Part No.	Description
HRP6950	Generator & Air Kit
HRP6953	Shelf Mount Tray



### Kit Includes:

- Cox 25' Hose Reel
- 14 Ga 50' Electrical Cord Reel
- Air Compressor
- Generac GP3500 IO
- 120 Volt Mule Conversion Wiring
- Shore/Gen Power Switch
- Remote Input Hookup
- Alternate Generator Exhaust
- 12 Volt Charger
- Regulator



## GENERATOR CABINET UPPER TRAY

Optional Add-On Tray to Maximize Storage Space within the Generator Cabinet  
- A Great Place for Storing Onboard Compressor & Generator Accessories

HRP6965



## BATTERY CHARGER KIT

Battery Charger Kit Includes 120 Volt Wiring  
- Use Australia Wiring with Kit if Needed

Description	Large Format	Small Format
Battery Charger Kit	HRP6901-BT-KIT	HRP6901-BT-KIT-AUS
Australia Wiring	HRP6901-BT-600-KIT	HRP6901-BT-600-KIT-AUS





## CABINET/WALL MOUNT RADIUS ROD RACKS

Build Your Radius Rod Rack: Finish with 2 Different Part Numbers

1) Select Desired Width			
15" Wide		20" Wide	
<div><div></div><div></div></div>			
2) Select a Corresponding Upper Tray with Desired Amount of Rows / Spots			
Single Row (6 Rods)	Double Row (12 Rods)	Single Row (8 Rods)	Double Row (16 Rods)
HRP6523S-15-(WHT/BLK)	HRP6521D-15-(WHT/BLK)	HRP6523S-20-(WHT/BLK)	HRP6521D-20-(WHT/BLK)
<div></div>	<div></div>	<div></div>	<div></div>
3) Select a Corresponding Lower Tray that Fits Desired Diameter Rods			
1.125" Dia. Rods: HRP6523S-15B-(WHT/BLK)	1.125" Dia. Rods: HRP6521D-15B-(WHT/BLK)	1.125" Dia. Rods: HRP6523S-20A-(WHT/BLK)	1.125" Dia. Rods: HRP6521D-20A-(WHT/BLK)
1.250" Dia. Rods: HRP6523S-15C-(WHT/BLK)	1.250" Dia. Rods: HRP6521D-15C-(WHT/BLK)	1.250" Dia. Rods: HRP6523S-20D-(WHT/BLK)	1.250" Dia. Rods: HRP6521D-20D-(WHT/BLK)
	1" Dia. Rods: HRP6521D-15A-(WHT/BLK)	1" & 1.250" Dia. Rods: HRP6523S-20B-(WHT/BLK)	1" & 1.250" Dia. Rods: HRP6521D-20B-(WHT/BLK)
		1.125" & 1.250" Dia. Rods: HRP6523S-20C-(WHT/BLK)	1.125" & 1.250" Dia. Rods: HRP6521D-20C-(WHT/BLK)



## 15" EXAMPLE:

- 1) 15" Wide
- 2) Double Row (12 Rods):  
HRP6521D-15-(WHT/BLK) x1
- 3) 1" & 1.250" Dia. Rods  
HRP6521D-15A-(WHT/BLK) x1



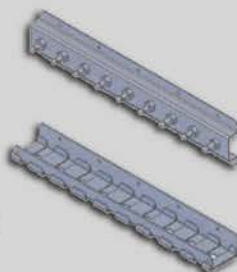
## 20" EXAMPLE:

- 1) 20" Wide
- 2) Single Row (8 Rods):  
HRP6521D-15-(WHT/BLK) x1
- 3) 1.125" Dia. Rods  
HRP6521D-15A-(WHT/BLK) x1

MICRO SPRINT  
RADIUS ROD RACK

- Single Row - 9 Positions
- 20" Wide
- Upper & Lower Tray Included
- Includes (3) 0.437" & (6) 0.375" Diameter Pins

HRP6540-C \$136.10



## RADIUS ROD MEASURING BOSS

- Quickly Adjust & Match the Replacement
- Knurled Edges for Superior Grip

HRP6208 \$62.40





# CABINET/WALL MOUNT SHOCK RACKS & SPARE STUDS

12

## CABINET/WALL MOUNT SHOCK RACKS

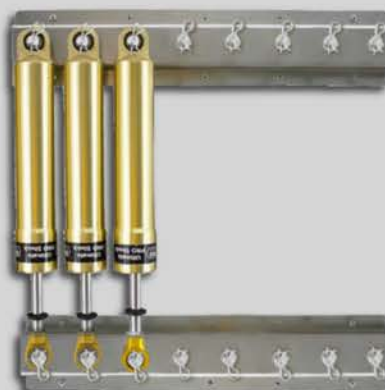
**Build Your Shock Rack:** Finish with 2 Of the Same Part Numbers (Sold Each: 2 Racks = 1 Complete Set)

1) Select Desired Width			
15" Wide		20" Wide	
			
2) Select a Corresponding Tray with Desired Amount of Rows / Spots			
Single Row (6 Rods)	Double Row (12 Rods)	Single Row (8 Rods)	Double Row (16 Rods)
HRP6524S-15-(WHT/BLK)	HRP6522D-15-(WHT/BLK)	HRP6524S-20-(WHT/BLK)	HRP6522D-20-(WHT/BLK)



### 15" EXAMPLE:

- 1) 15" Wide
- 2) Double Row (12 Rods)  
HRP6522D-15-(WHT/BLK) x2



### 20" EXAMPLE:

- 1) 20" Wide
- 2) Single Row (8 Rods)  
HRP6524S-20-(WHT/BLK) x2

## SPARE STUDS

Sold Each

Replacement Rue Ring Clips Available  
Online at [hrpracing.com](http://hrpracing.com)

Radius Rod Rack Studs				
Double HRP6525	Single HRP6527	Single HRP6533	Single HRP6534	Single HRP6535

Radius Rod Rack Stud	Shock Rack Studs		Gear Pin Boss	Steering Rod Pin
Single HRP6536	Double HRP6526	Single HRP6528	HRP6537	HRP6538



## 12 VOLT LIGHTS

Generator Kit Needed to Power Lights (Page #6)

**The Large Format 12 Volt LED Light Kit Includes 3 Light Strips:**

- 1 Upper Light Strip in the Front Passenger Side Cabinet
- 1 Upper Light Strip in the Front Driver Side Cabinet
- 1 Lower Light Strip Above the Rear Door Shelf

**HRP6951**

**The Small Format 12 Volt LED Light Kit Includes 2 Light Strips:**

- 1 Upper Light Strip Between the Front Driver & Passenger Side Cabinet
- 1 Lower Light Strip Above the Rear Door Shelf

**HRP6951-600**

**The Universal Format Add-On Lower Bar Includes 2 Light Strips:**

- 2 Upper Light Strips on the Upper Enclosed Rear Door

**HRP6951-DL**



## CARPETED SIDES & FRONT BOARD

Mount Anything by Using Sheet Metal Screws

- .75" Plywood Construction

Description	Large Format	Small Format
Cabinet Sides	<b>HRP6911</b>	<b>HRP6911-600</b>
Front Board	<b>HRP6911-FB</b>	<b>HRP6911-FB-600</b>



## MULTI PURPOSE UTILITY TRAY

Battery Packs, Tools, Parts, & More

- 8" x 16"
- Aluminum
- Custom Finishes Available

**HRP6963**



## TOWEL BOX TRAY

Fits Shop Towels in a Box: [HRP6192](#) (See on Page #22)

- 9.75" x 10.75"
- Aluminum
- Custom Finishes Available

**HRP6962**





## LED TAIL LIGHTS & GROMMETS

Grommets Include Wiring Pigtails

Part No.	Description
<b>Round Style</b>	
HRP6924-R	LED Light
HRP6924-G	Grommets
<b>Oval Style</b>	
HRP6924-R-OVAL	LED Light
HRP6924-G-OVAL	Grommets



2022 & Older HRP Conversions Use Circle Style Tail Lights



2023 & Newer HRP Conversions Use Oval Style Tail Lights

## BACKUP CAMERA KIT

Hangs From Roof

HRP6906-B-ASSY



## CUSTOM NAME PLATES

Powder Coated Metal

Part No.	Description
HRP6952-S	Simple Design
HRP6952-C	Complex Design
HRP6952-P	Plastic Replacement



## HRP NAME PLATE

Included With Conversion



## REAR DOOR PROPS

2 Included with Conversion  
- Sold Each

Drawer Style	Large Format	Small Format
Exposed Drawers	HRP6966-30	HRP6966-20
Enclosed Drawers	HRP6966-70	-





## CTECH DRAWER STACKS

Drawer Stacks & Stock Colors Included With Conversion

- Custom Colors Available at Extra Charge



Description	20" Wide - 8 Drawers	30" Wide - 8 Drawers	40" Wide - 6 Drawers
<b>CTECH Drawer Stacks</b>			
CTECH Drawers	<b>HRP6940-20</b>	<b>HRP6940-30</b>	<b>HRP6940-40</b>
<b>Replacement Drawer Components</b>			
4" Long Faces	<b>HRP6940-20-F4</b>	<b>HRP6940-30-F4</b>	<b>HRP6940-40-F4</b>
6" Long Faces	<b>HRP6940-20-F6</b>	<b>HRP6940-30-F6</b>	<b>HRP6940-40-F6</b>
Drawer Handles	<b>HRP6940-20-H</b>	<b>HRP6940-30-H</b>	<b>HRP6940-40-H</b>
<b>Drawer Matting, Foam, &amp; Carpeting</b>			
Drawer Mat	<b>HRP6909-20-MAT</b>	<b>HRP6909-30-MAT</b>	<b>HRP6909-40-MAT</b>
Drawer Foam	<b>HRP6909-20-FOAM</b>	<b>HRP6909-30-FOAM</b>	<b>HRP6909-40-FOAM</b>
Drawer Carpet	<b>HRP6909-20-CARPET</b>	<b>HRP6909-30-CARPET</b>	<b>HRP6909-40-CARPET</b>
Upper Shelf Mat	<b>HRP6908-MAT</b>	<b>HRP6908-MAT</b>	<b>HRP6908-600-MAT</b>
Upper Shelf Carpet	<b>HRP6908-CARPET</b>	<b>HRP6908-CARPET</b>	<b>HRP6908-600-CARPET</b>



## BLACK DRAWER HANDLE UPGRADE

Upgrade from Silver Handles

- Includes Necessary Amount of Handles for a Complete Drawer Stack

**HRP6940-BLK-HANDLES**



## CUSTOM DRAWER ORGANIZERS

Call for Specs, Pricing, & Options

- Tool Trays
- Socket & Ratchet Trays





## DRAWER SLIDE TRAY

Plastic Glide Rail

Part No.	Width
HRP6910-20	20"
HRP6910-30	30"
HRP6910-40	40"



## FULL WRENCH TRAY

25" x 11" x 1.25"  
- 9 Compartments

HRP6115-7



## WRENCH RACKS

Bare Aluminum

Part No.	Spots	Fits
Open End / Ratchet Box End Wrenches		
HRP6120-F	13	1/4" - 1"
HRP6121-B	9	1/4" - 3/4"
HRP6121-F	9	1/4" - 3/4"

Part No.	Spots	Fits
Combination Wrenches		
HRP6122-F	8	5/16" - 3/4"
HRP6123-B	4	5/16" - 3/4"



## TOOL & PART TRAYS

Pliers, Screwdrivers, Specialty Tools, Parts, Etc.



Width	4" Long	6" Long	8" Long	10" Long	12" Long	6" Wide
2.0"	HRP6152A	HRP6152B	HRP6152C	HRP6152D	HRP6152E	
2.5"	HRP6153A	HRP6153B	HRP6153C	HRP6153D	HRP6153E	
3.0"	HRP6154A	HRP6154B	HRP6154C	HRP6154D	HRP6154E	
3.5"	HRP6155A	HRP6155B	HRP6155C	HRP6155D	HRP6155E	
4.0"	HRP6156A	HRP6156B	HRP6156C	HRP6156D	HRP6156E	
6.0"						HRP6157B





## PAINTED HOODS

- Stock Colors & Lin-X Included with Conversion
- Custom Colors Available at Extra Charge

Series:	3000	4000	4000 Lin-X	600	SX	600/SX Lin-X
Part No:	HRP6989	HRP6989-4000	HRP6989-4000-LINX	HRP6989-600	HRP6989-SX	HRP6989-600-LINX



## UTILITY JUG HOLDER

Utility Jugs Available on Page #22

- Stock Colors Included
- Custom Colors Available at Extra Charge
- Holds 2 Jugs
- Brackets Included

HRP6980-4000



## HEADACHE BOARD TIE ROD RACK

4 Plastic Tie Rod Holders are Included with Tie Rod Rack

- Stock Colors Available
- Custom Colors at Extra Charge

Part No.	Description
HRP6972-H	Head Rack
HRP6972-A	Under Deck
HRP6937	Replacement Tie Rod Holders





## FRONT HANGING STYLE NOSE WING MOUNTS

Aluminum  
- Custom Colors Available at Extra Charge

Part No.	Finish
HRP6978	Bare
HRP6978-WHT	White
HRP6978-BLK	Black
HRP6978-SEMIBLK	Semi Gloss Black



## REAR SLIDE IN STYLE NOSE WING MOUNT

Works with Half Cabinet Conversions

HRP6977



## REAR HANGING STYLE NOSE WING MOUNT

Hangs Off the Top Deck on Half Cabinet Mule Conversions

HRP6979





## MULE CONVERSION AXLE RACKS

Necessary Clamp Rings are Sold Separately

- Rubber Edging where the Axle Sits
- Adjustable & Removable

Style:	Front Axle Rack	Front Axle Rack	Rear Axle Rack	Combo Axle Rack	Midget Axle Rack
Part No:	HRP6995	HRP6995-600	HRP6996	HRP6997	HRP6997-M



Front Axle Rack



Combo Axle Rack



Rear Axle Rack

## AXLE RACK CLAMP RINGS

4 Needed For Axle Rack Installation

Part No.	Dia.	Series
HRP6998	Ø 1.69	Large Format
HRP6998-600	Ø 1.89	Small Format
HRP6999	Ø 1.75	Polaris Ranger



## REAR VIEW MIRRORS

Clamp On Roll Cage Style

Part No.	Description
<b>Standard Option</b>	
HRP6935	Includes 1 Universal
<b>Upgraded Option (Fold In)</b>	
HRP6935-FG	Includes Left & Right
HRP6935-FG-600	Includes Left & Right





## MULE CONVERSION UPPER DECKS

- Downward Roof Bend
- .25" Aluminium



Smooth

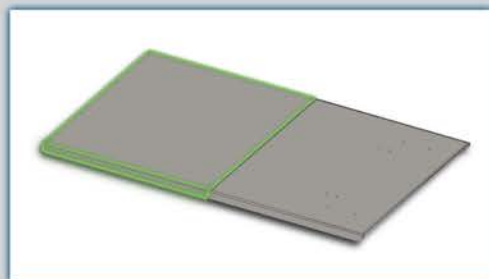


Diamond Plate

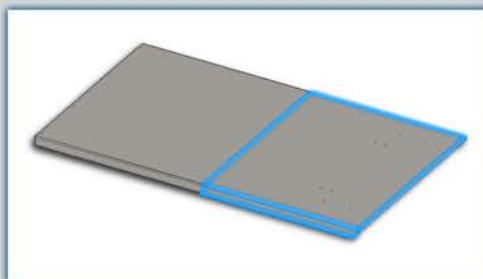


Lin-X

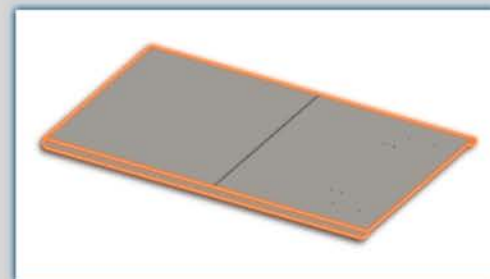
Series	Full Roof - Smooth	Full Roof - Diamond Plate	Front Add-On Driver Roof	Lin-X Top Deck Surface
4000	HRP6975-S	HRP6975-D	HRP6975-A	HRP6975-LINX
600			HRP6975-600	HRP6975-LINX-600



\*Included\* Rear Deck



\*Add-On\* Front Deck

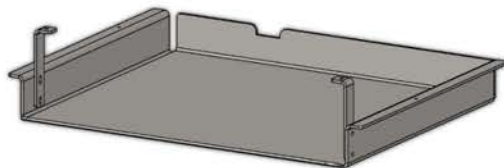


Full Deck

## BODY PANEL MOUNT

- Hangs Under Drivers Side
- Holds 3.25" Long Panels

HRP6987-A



## FIRE EXTINGUISHER MOUNT

COMING SOON

## K HANDLE ASSY

Our **NEW** K-Handle Makes it Safer & Easier to Climb Up & Down From the Roof

- Locks Into Upright Position During Use
- Lays Down Flush When Done!

HRP6973-500

Latching System



Flat "Resting" Position





## PUSH BAR & BRACKETS

- Bracket Necessary for Installation (Sold Separately)
- Steel Construction & Black Delrin Push Surface
- 1 Included with Conversion

Push Bar - Universal Series				
HRP6985-F				
Bracket - Series Specific				
2500	3000	4000	600	SX
HRP6985-2500	HRP6985-3000	HRP6985-4000	HRP6985-600	HRP6985-SX



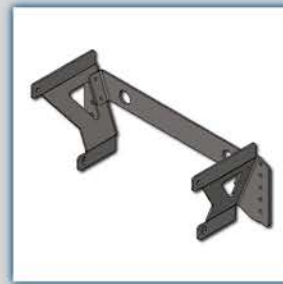
HRP6985-2500



HRP6985-3000



HRP6985-4000



HRP6985-600



HRP6985-SX

## OPTIONAL PUSH BAR ADD-ONS

### TIE DOWN BRACKET

#### Add-On Option

- Add to Left Side, Right Side, or Both
- Sold Each

HRP6985-TIE



### RUBBER BUMPER KIT

- Added Cushion when Pushing Sprint Car
- Bracket Included

HRP6985-R



## COIL OVER SHOCK KITS & BRACKETS

Brackets are Sold Separately (Necessary for Installation)

- Shock Kits Include 2 Shocks
- Bracket Kits Include LH & RR

Part No.	Description
HRP6961-ALUM	Aluminum Shock Kit
HRP6961-STEEL	Steel Shock Kit
HRP6991-4000-KIT	Bracket
HRP6991-600-KIT	Bracket

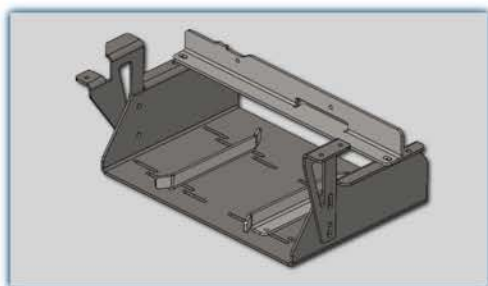




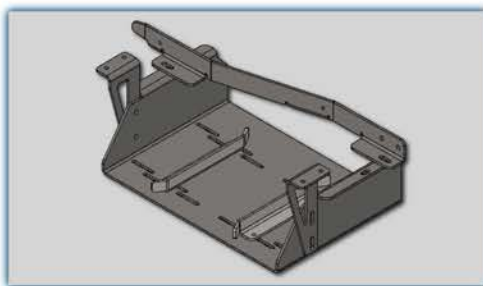
## JACK HANGERS

- Black Coated Steel
- 1 Included With Conversion

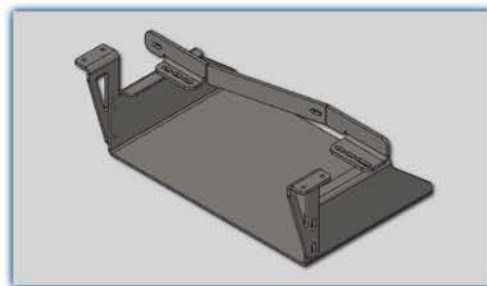
Part No.	Width
HRP6988-4000-16	16"
HRP6988-600-16	16"
HRP6988-18	18"



HRP6988-4000-16



HRP6988-600-16



HRP6988-18

## BOLT ON LADDER

- Black Coated Steel
- 1 Included with Conversion

Part No.	Description
HRP6974-4000	Ladder
HRP6974-600	Ladder



## HOOP

- Holds the Jack Hanger in Position with the Ladder
- Clear Anodized Aluminum
- 1 Included with Conversion

HRP6974-HOOP



## BATTERY UPGRADE

HRP6948



## DUAL BATTERY UPGRADE

Call for Information





## FENDER SKIRTS

Fits **ONLY** HRP Mule Conversion Decks  
 - Powder Coated to Mule Specifications  
 - Steel & Aluminum Construction

Part No.	Side
<a href="#">HRP6969LH-PRO</a>	Left
<a href="#">HRP6969RH-PRO</a>	Right



## FENDER SKIRT BRACKET KIT

Includes:  
 - 1 LH Bracket  
 - 1 RH Bracket

[HRP6967](#)

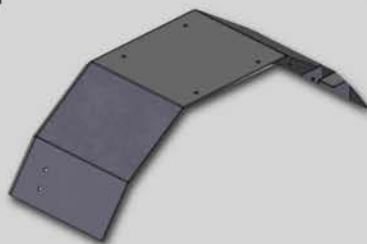


## COMPLETE FENDER SET

Set Includes:

- Skirts
- Fenders
- Mounting Brackets

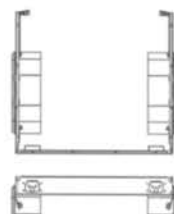
[HRP6968-B-SET](#)



## STOCK BED FENDER SKIRTS

Includes [HRP6968-B-SET](#) Above

[HRP6969K-ASSY](#)



## KAWASAKI MULE TRAILERS

Hitch Included

Part No.	Description
<a href="#">HRP6928-B</a>	With Dump Feature
<a href="#">HRP6928-N</a>	Without Dump Feature





## MULE WHEEL COVERS

Bracket Necessary for Installation (Sold Separately)

Description	10" Wheel	12" Wheel
Black Finish	HRP6994-BLK	HRP6994-12-BLK
Semi Gloss Black Finish	HRP6994-SEMIBLK	HRP6994-12-SEMIBLK
White Finish	HRP6994-WHT	HRP6994-12-WHT
Bare Finish	HRP6994-BARE	HRP6994-12-BARE
Red Sanders	HRP6993	-
Yellow Weld	HRP6994	-



Black Finish



White Finish



Bare Finish



Red Sanders



Yellow Weld

## WHEEL COVER BRACKETS

Brackets Include Springs & Buttons (Set)

- Aluminum Construction
- 1 Set Included With Conversion

Series	10" Wheel	12" Wheel
Large Format	HRP6992	-
Small Format	HRP6992-600	HRP6992-SX-12



## TURF TIRES

Fits 10" Wheel

- Rims & Tires Sold Separately
- Sold Each

Part No.	Description
HRP6947	Carlisle (Aggressive)
HRP6947-GP	Golf Pro (Smooth)



HRP6947



HRP6947-GP

## KAWASAKI RIMS

Fits 10" Wheel

- Rims & Tires are Sold Separately
- Sold Each

Part No.	Description
HRP6946	Large Format Rim
HRP6946-600-F	Small Format Front Rim
HRP6946-600-R	Small Format Rear Rim



## INNER TIRE TUBES

Fits 10" Wheel

- Sold Each

Part No.	Description
HRP6945	Large Format
HRP6945-600	Small Format



## CORDLESS DRILL/IMPACT HOLDER

HRP6395-(WHT/BLK)



## CORDLESS DRILL HOLDER

Mounts Horizontally or Vertically

- Standard Mount - 2.57" I.D.
- Adjustable Mount - 2.12" - 2.92" I.D.

Part No.	Description
HRP6396-1-WHT	Standard Mount
HRP6396-WHT	Adjustable Mount



## UTILITY FUNNELS, HOLDERS, & OPTIONS

Part No.	Description
HRP6262-(WHT/BLK)	Funnel Hook
BEH-366-55001406	Triangle Funnel
BEH-366-55000001	Funnel Filter



HRP6262-(WHT/BLK)



BEH-366-55001406

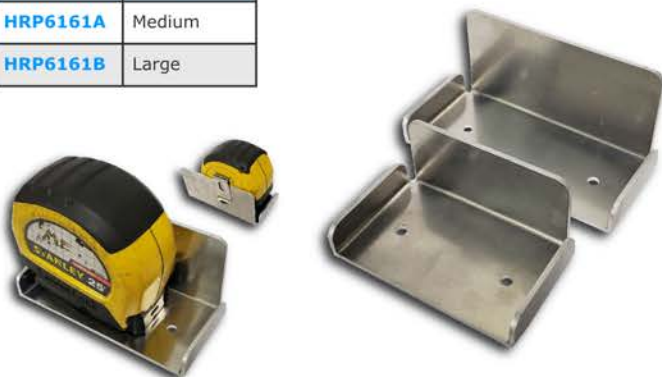


BEH-366-55000001

## TAPE MEASURE RACKS

Mounts to Tool Box Drawer

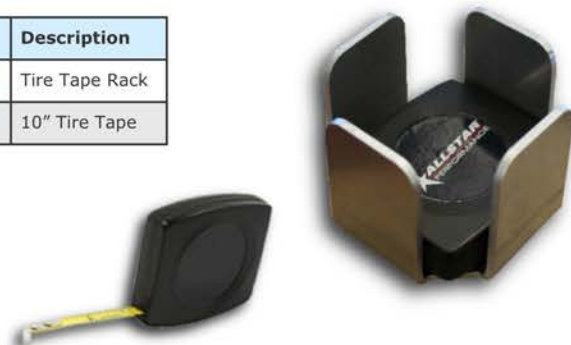
Part No.	Description
HRP6161A	Medium
HRP6161B	Large



## 10" TIRE TAPE & RACK

Rack Holds Up to 3 Dispensers at a Time

Part No.	Description
HRP6160	Tire Tape Rack
HRP6823	10" Tire Tape





## NITRO BOTTLE HOLDERS

NEW Style Coming Soon!

### BOLT ON STYLE - 9"

Sold as a Set (2)

HRP6060



### SET IN STYLE - 7"

HRP6059-(WHT/BLK)



## MOOSE BLOCKS HOLDER

- Mounts to the Inside of your Mule Conversions Upper Cabinet Box
- Bare Aluminum
- Holds Up to 4 Moose Blocks

HRP6142A



### MOOSE BLOCKS

Part No.	Description
HRP6253	Tall Setup
HRP6251	Short Setup



## UTILITY JUGS

Manufacture / Style May Vary

Part No.	Description
HRP6364	5 Gallon Jug
HRP6363	2.5 Gallon Jug



## SHOP TOWELS IN A BOX

- 200 Count
- Color May Vary

HRP6192





**GOTTA ROLL WITH THE BEST TO BE THE BEST**

***hrpracing.com***

## **HEPFNER RACING PRODUCTS**

2133 Constitution Ave.  
Hartford, WI 53027

## **HOURS**

8:00 am - 5:00 pm CST  
Monday - Friday

## **CONTACT US VIA EMAIL**

hrpsales@ghilaser.com

## **SHOP & ORDER ONLINE**

hrpracing.com  
Search for Products Online by Part Number

## **ORDER BY PHONE**

HRP: 262-457-5015  
STREETER: 262-457-5018

## **PAYMENTS**

We Accept Visa, MasterCard, Discover & AmEx

## **SHIPPING**

Our Facility Ships UPS Daily, but Also Offers Customer Pickup by Request