

# 2023 STW TOP WING ASSY INFO

---



# HELPFUL HINTS ASSEMBLING HRP WINGS

## BLUNT NOSE WINGS VS POINTED NOSE WINGS



BLUNT NOSE

POINTED NOSE

Blunt and Pointed wings use unique nose Caps

STW5012-B Nose Cap Blunt Nose

STW5012-P Nose Cap Pointed Nose

## FLAT WINGS VS DISHED WINGS

Dished and Flat wings use the same:

STW5017 Bottom Skin

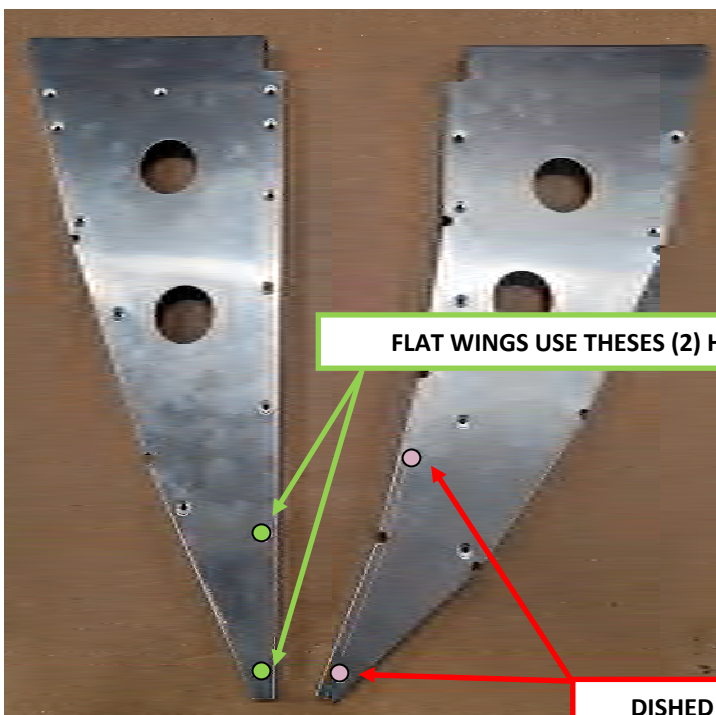
STW5018 Top Skin

STW5019 Top Rear Skin

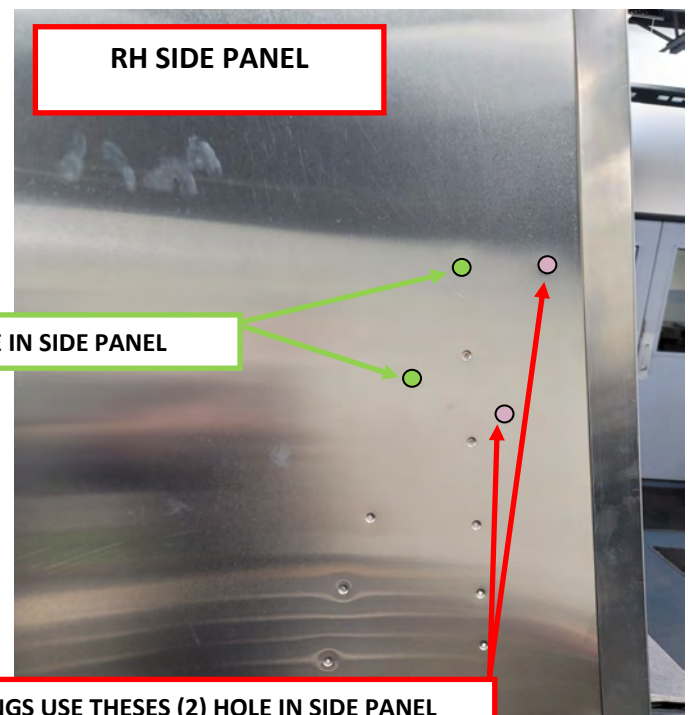
Dished and Flat wings unique parts:

STW5020-D Bottom Rear Skin Dished

STW5020-F Bottom Rear Skin Flat



FLAT WINGS USE THESES (2) HOLE IN SIDE PANEL



RH SIDE PANEL

DISHED WINGS USE THESES (2) HOLE IN SIDE PANEL

# EXTRA HOLES IN BOARD

**FLAT WING**

**LEFT AND RIGHT EXTRA HOLES**

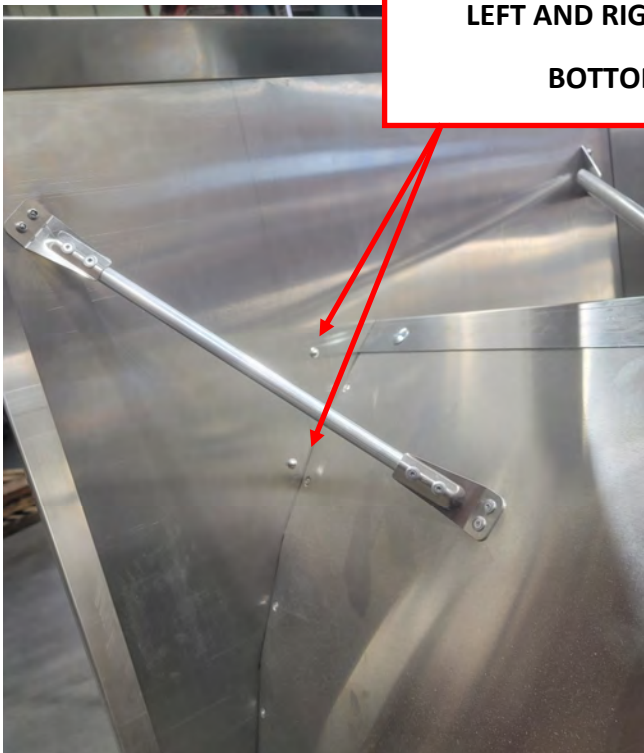
**TOP SURFACE**



**DISHED WING**

**LEFT AND RIGHT EXTRA HOLES**

**BOTTOM SURFACE**





# POINTED NOSE WRAP

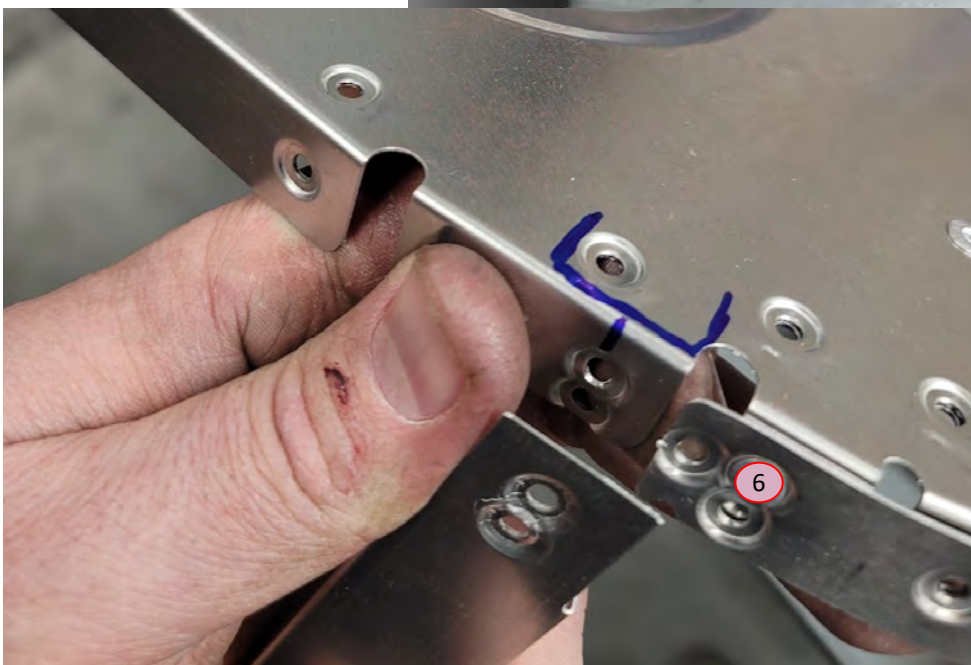
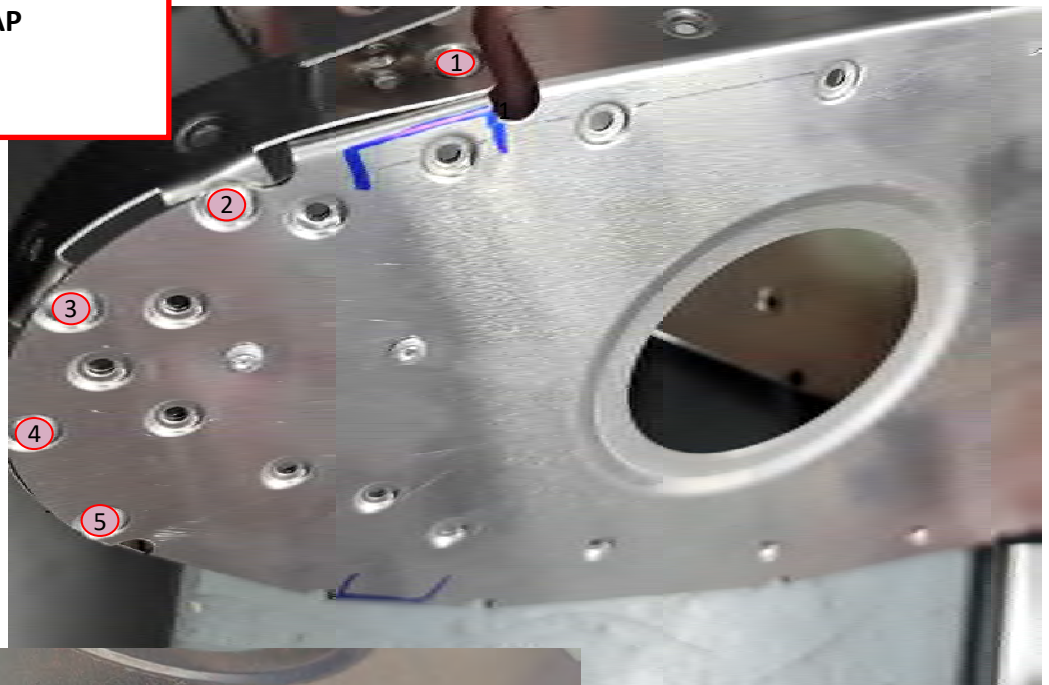
RIVETING ON NOSE WRAP—BLUNT NOSE

6 RIVETS IN ORDER



BLUNT—NOSE WRAP

STW5010-B



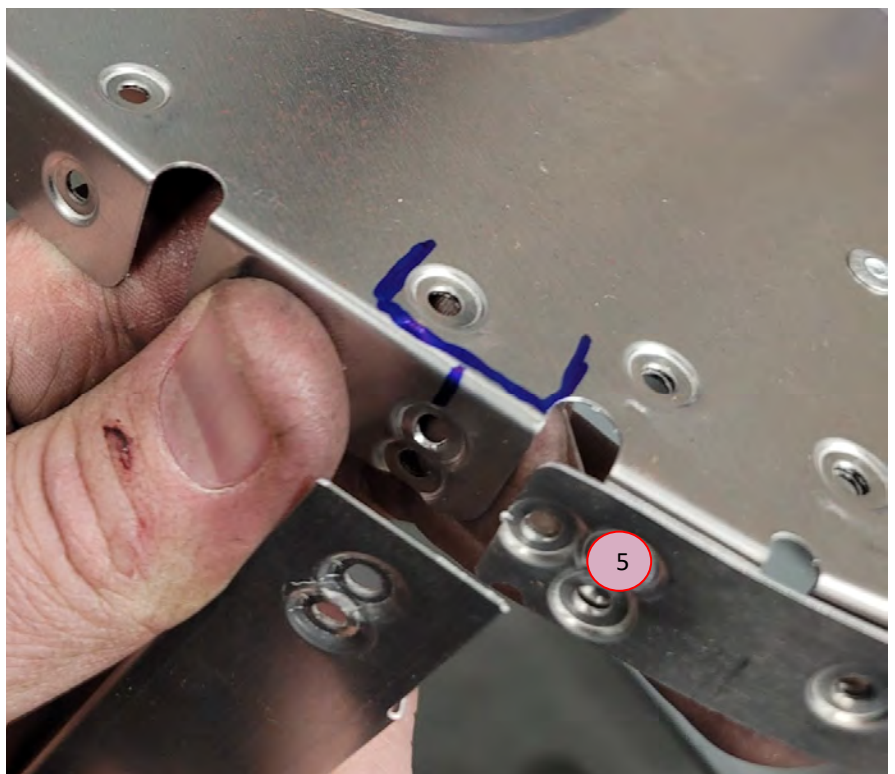
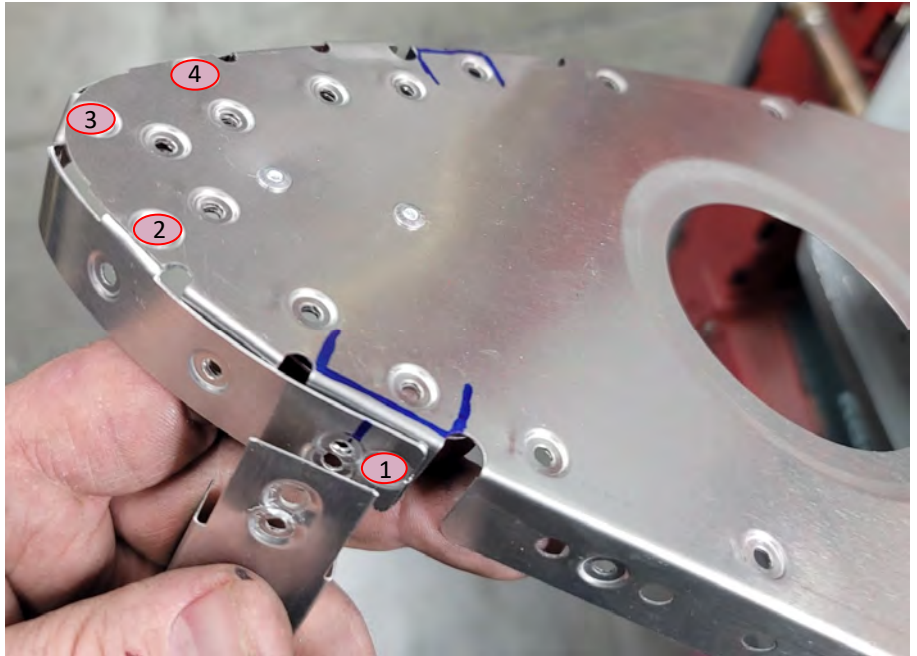
# POINTED NOSE WRAP

POINTED NOSE—NOSE WRAP

STW5010-P



RIVETING ON NOSE WRAP  
5 RIVETS IN ORDER



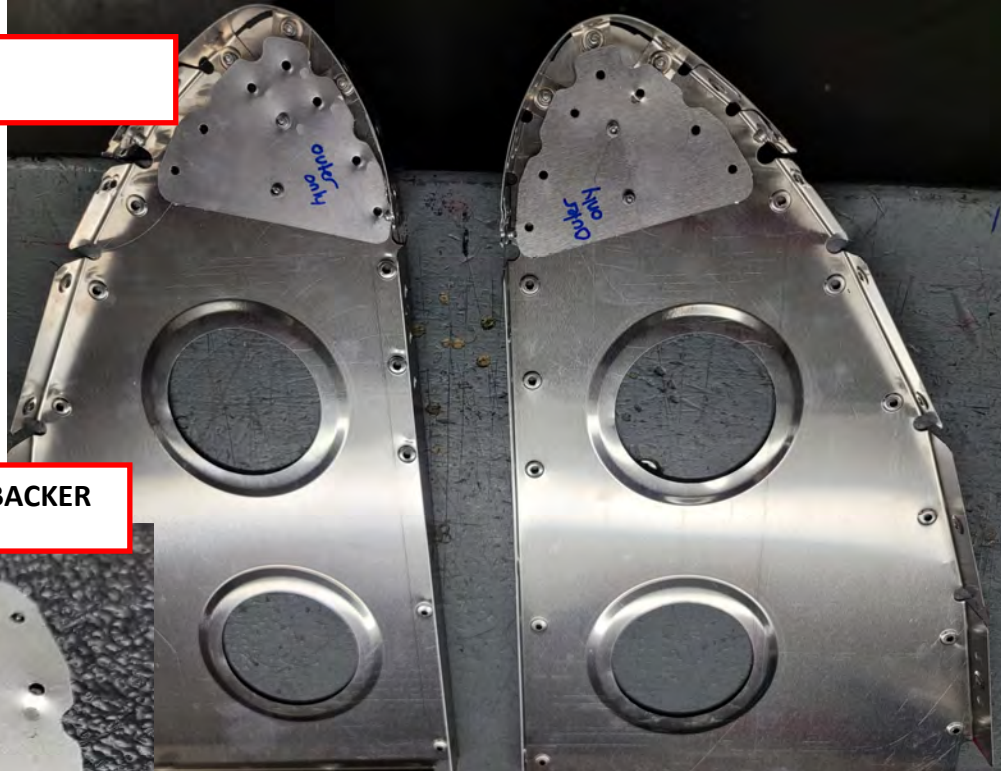


# BACKER FOR OUTSIDE NOSE PROFILES

RIVETING ON BACKER

2 RIVETS IN EACH BACKER FROM OUTSIDE

POINTED NOSE



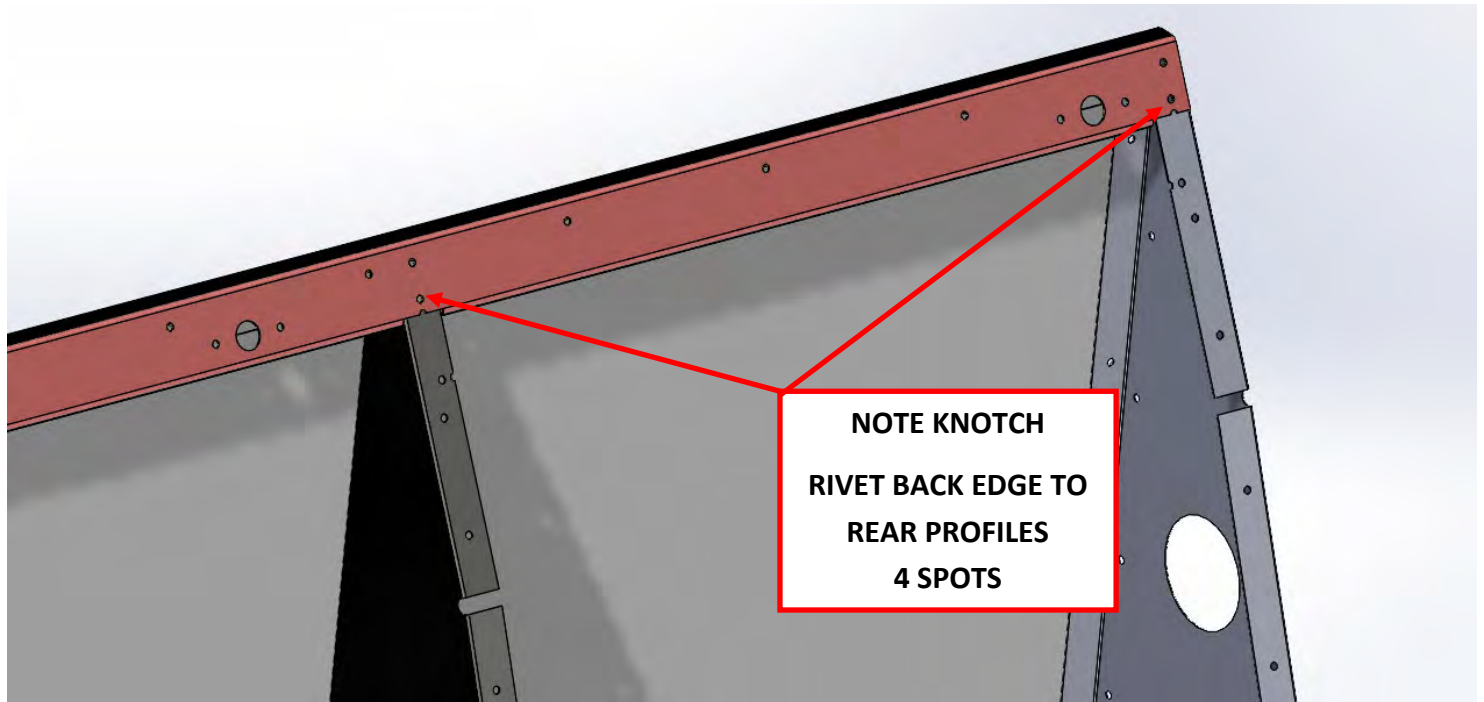
STW5026 PROFILE NOSE BACKER



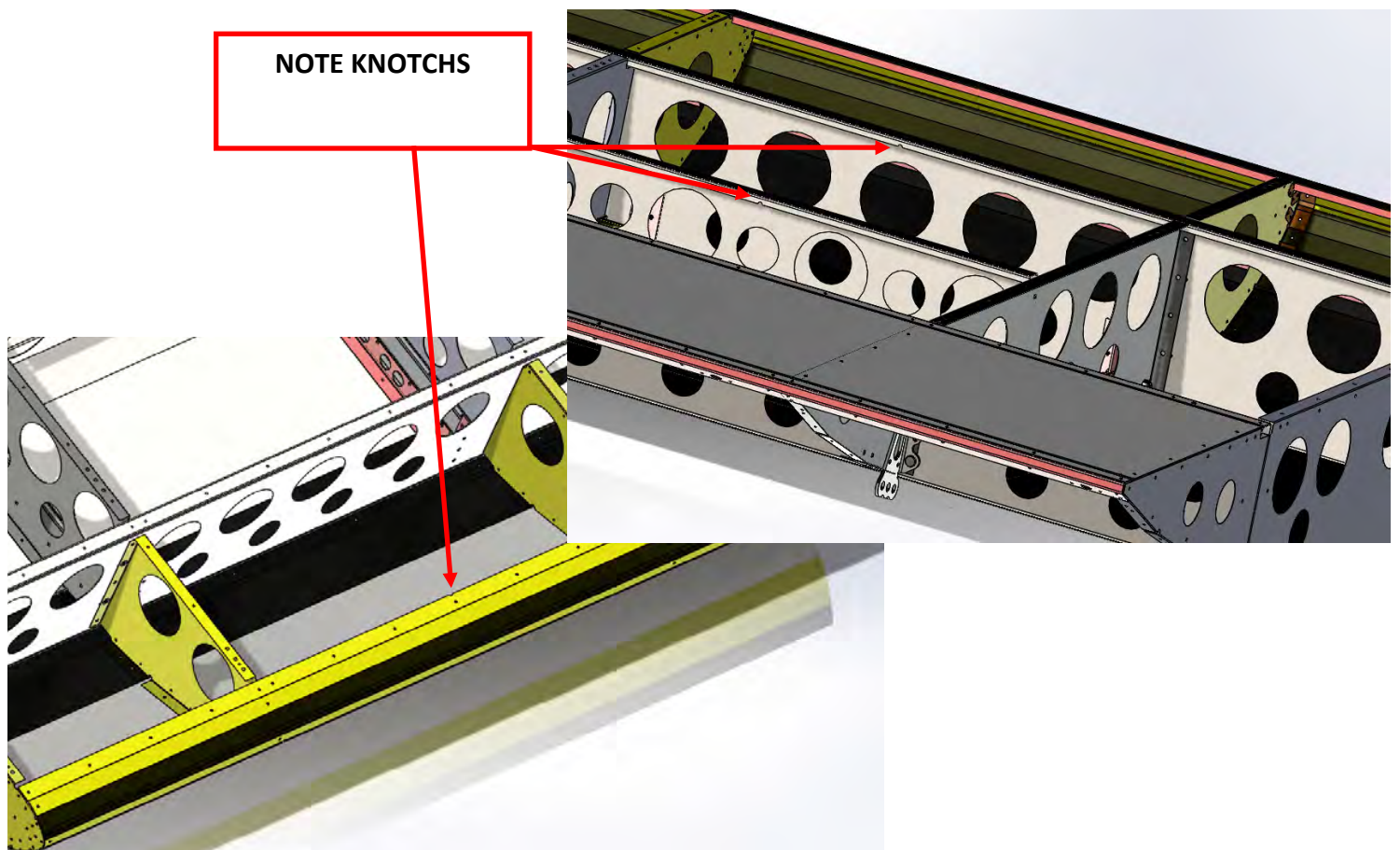
BLUNT NOSE



# RIVETING ON BACK EDGE TO REAR PROFILES

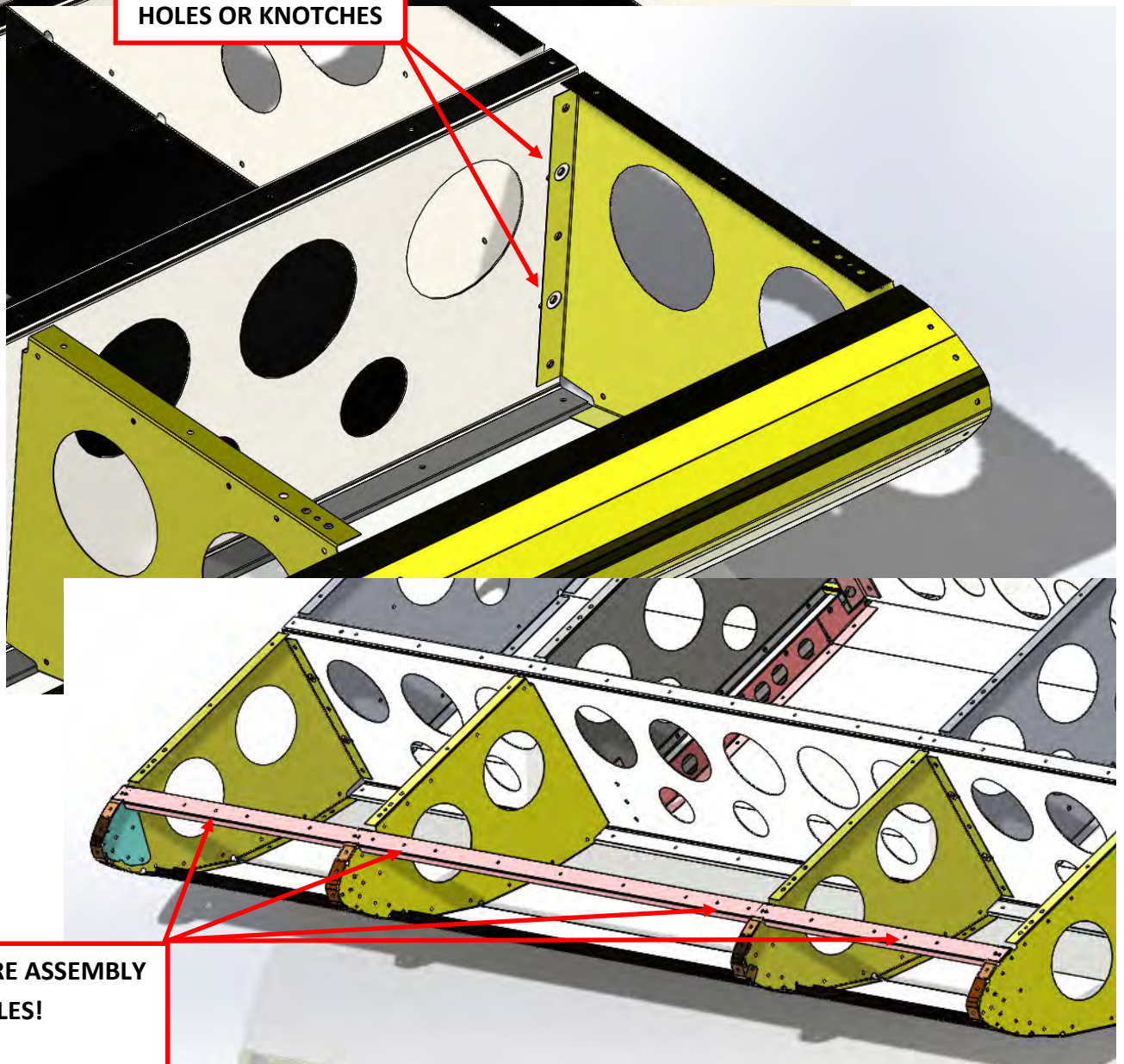
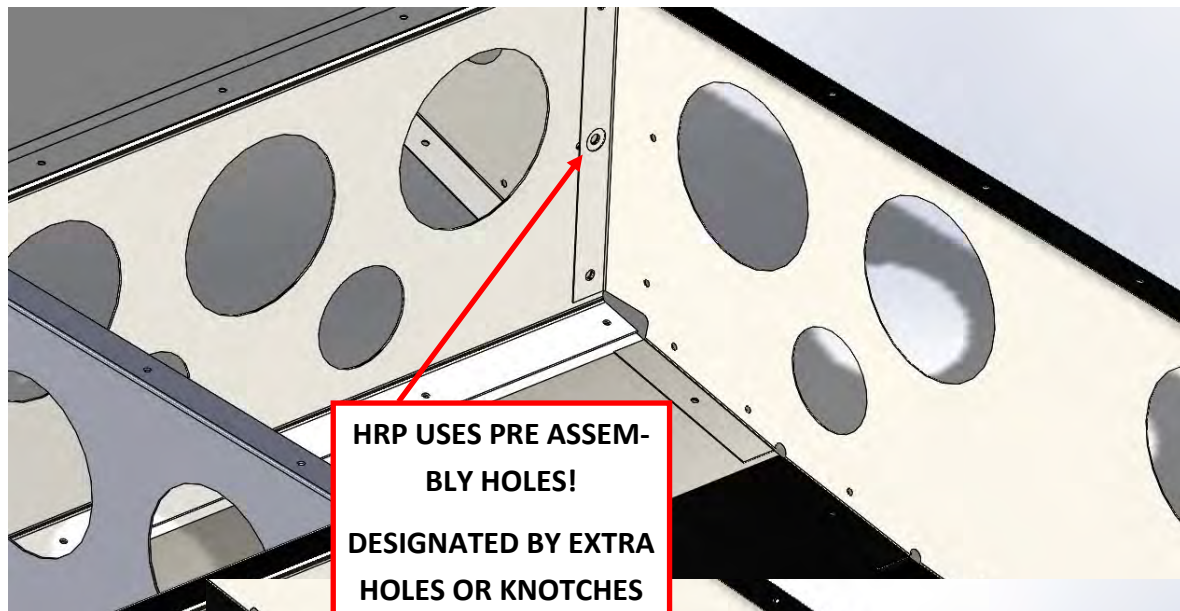


# KNOTCHES HELP DESIGNATE TOP OR FRONT





# PRE ASSY HOLES USED





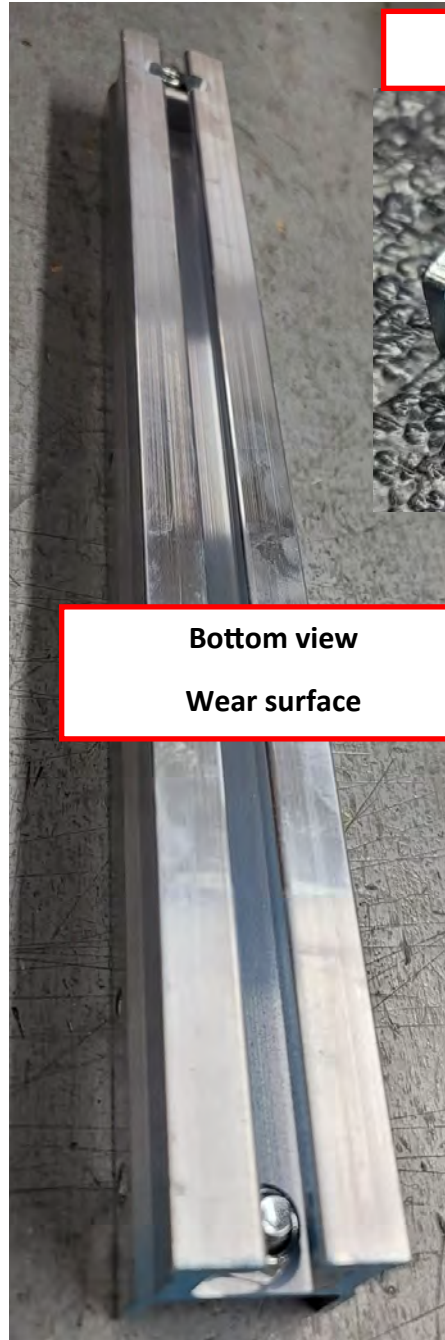
# KNOW THE FRONT AND BACK OF THE ALUM RUNNER

It is very important that runner is riveted and bolted into wing properly and securely!!

BACK OF RUNNER—WHERE POST IS INSERTED AND ENTRY PLATE IS BOLTED ON



Top view



Bottom view

Wear surface



ENTRY PLATE

FRONT OF RUNNER , SHOULD BE PAINTED BLUE OR RED

# RIVETING ON RUNNER SUPPORT

RIVET 1, 2 AND 3 FIRST

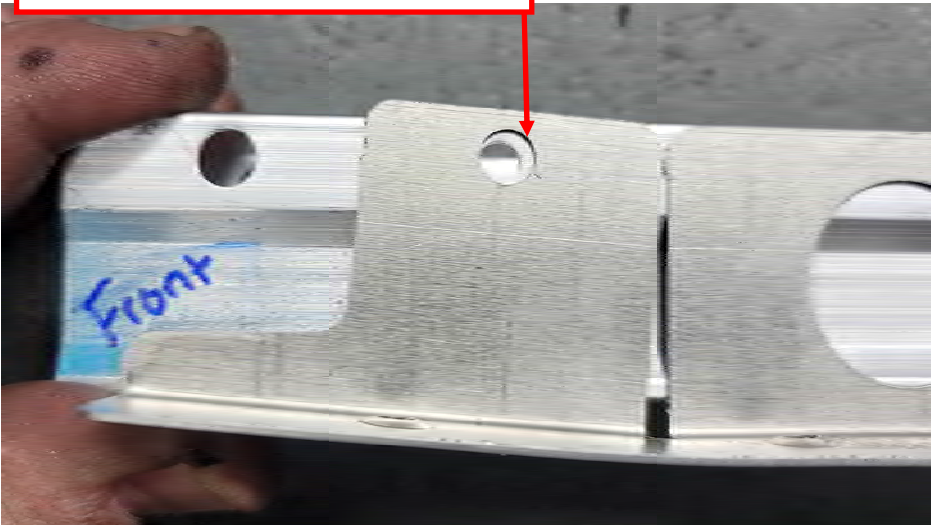
1

2

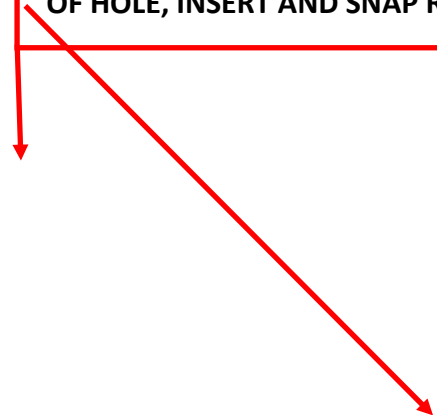
3

4TH RIVET- FLEX RUNNER SUPORT  
UPWARD LEAVING GAP AT TOP OF  
HOLE, INSERT AND SNAP RIVET

SHOWN RH RUNNER ASSY



5TH RIVET- FLEX RUNNER SUPORT  
UPWARD LEAVING GAP AT BOTTOM  
OF HOLE, INSERT AND SNAP RIVET





# BOLTING IN ALUM RUNNER INTO ASSY

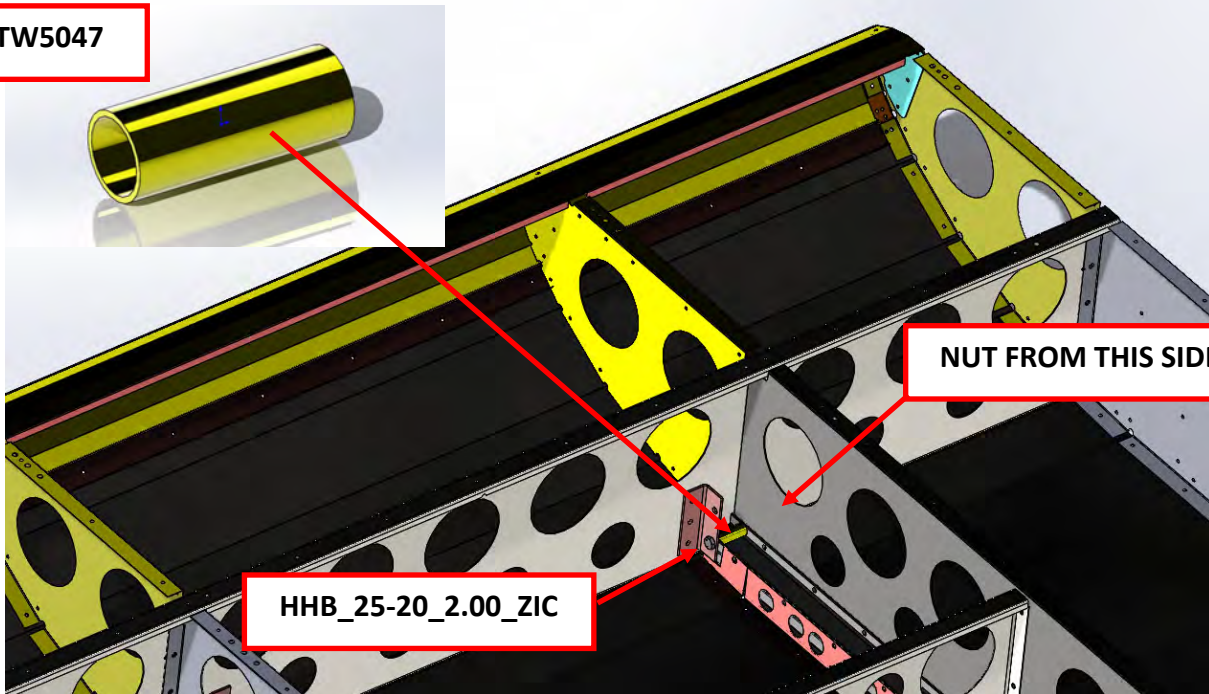


AFTER RIVETING RUNNER INTO ASSY

INSERT STW5047 THE USE HHB\_25-20\_2.00\_ZIC AND NYLOCK NUT

TO SECURELY BOLT IN RUNNER 4 PLACES

STW5047



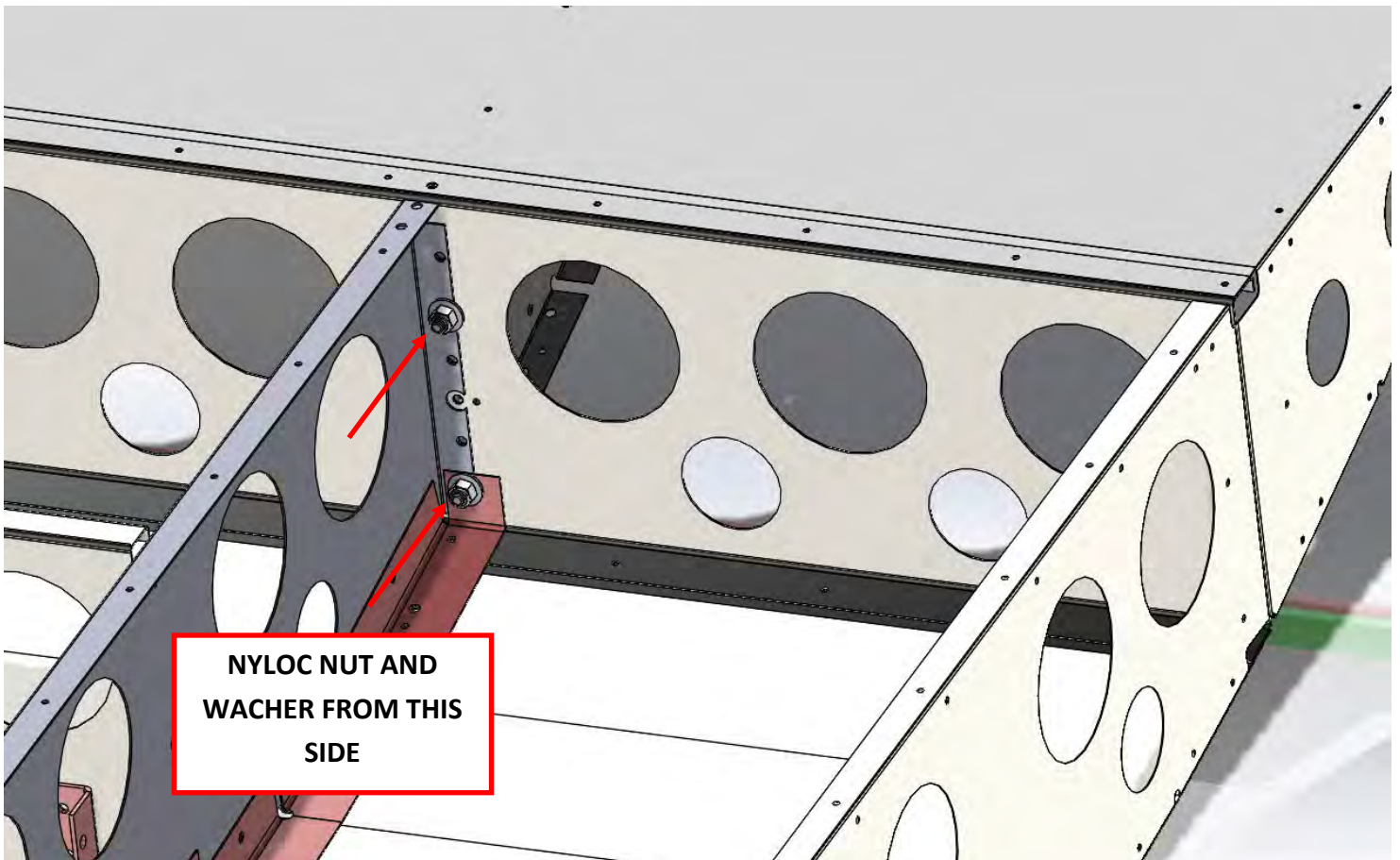
NUT FROM THIS SIDE

HHB\_25-20\_2.00\_ZIC

# BOLTING IN REAR MOUNT BRACKETS



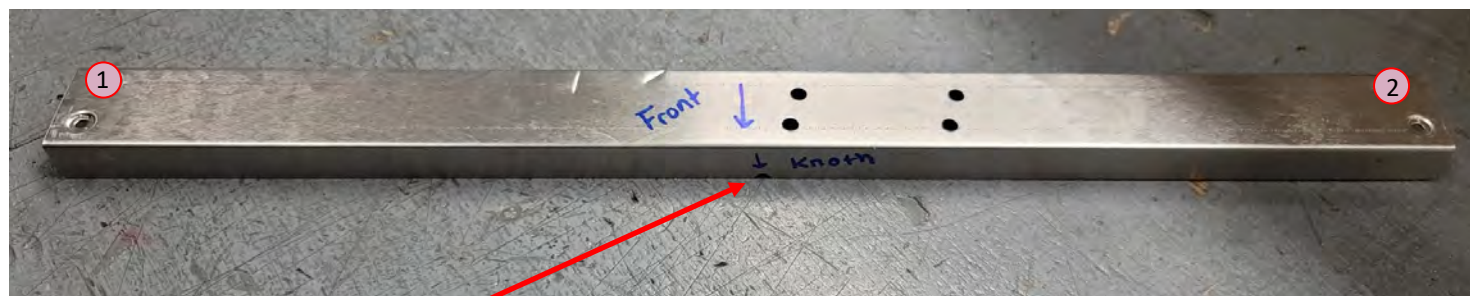
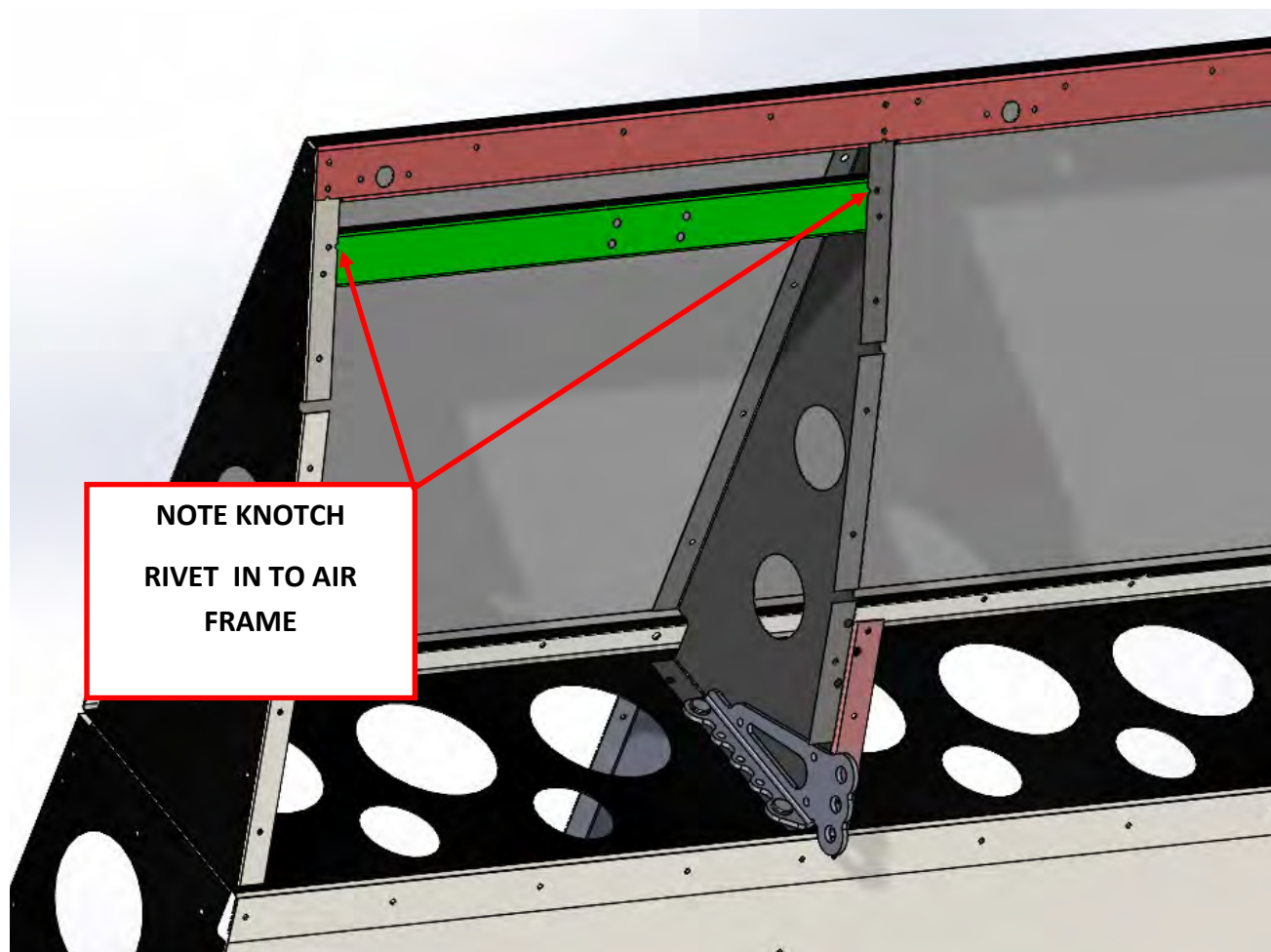
PEM STUD SHOULD ALREAD BE IN METAL MOUNT BRACKET!  
AFTER RIVETING REAR TAIL SECTION TO CENTER ASSY  
THREAD ON 4 NYLOC NUT AFTER INSTALLING FLAT WASHERS.



NYLOC NUT AND  
WACHER FROM THIS  
SIDE

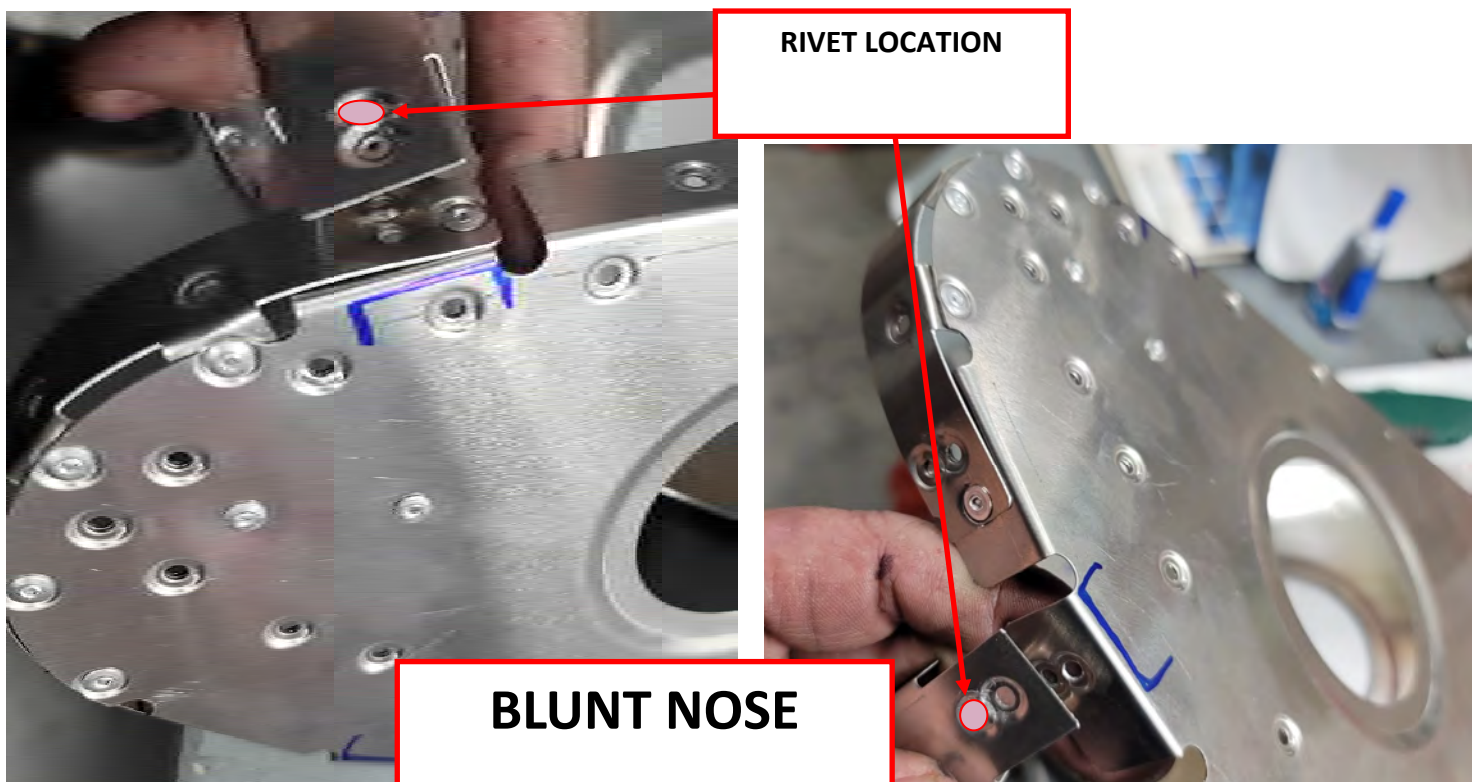
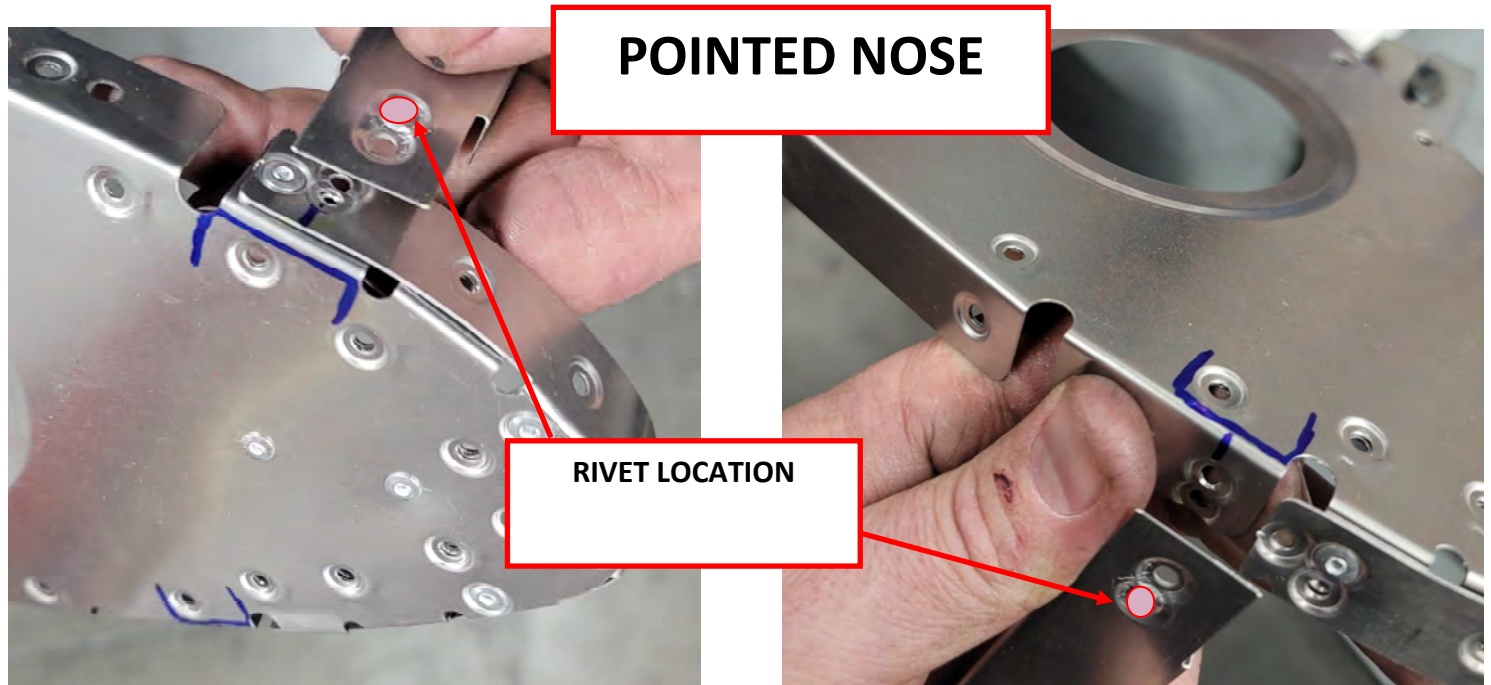


# RIVETTING IN INNER SUPPORT FOR LEFT REAR #5 BRACE



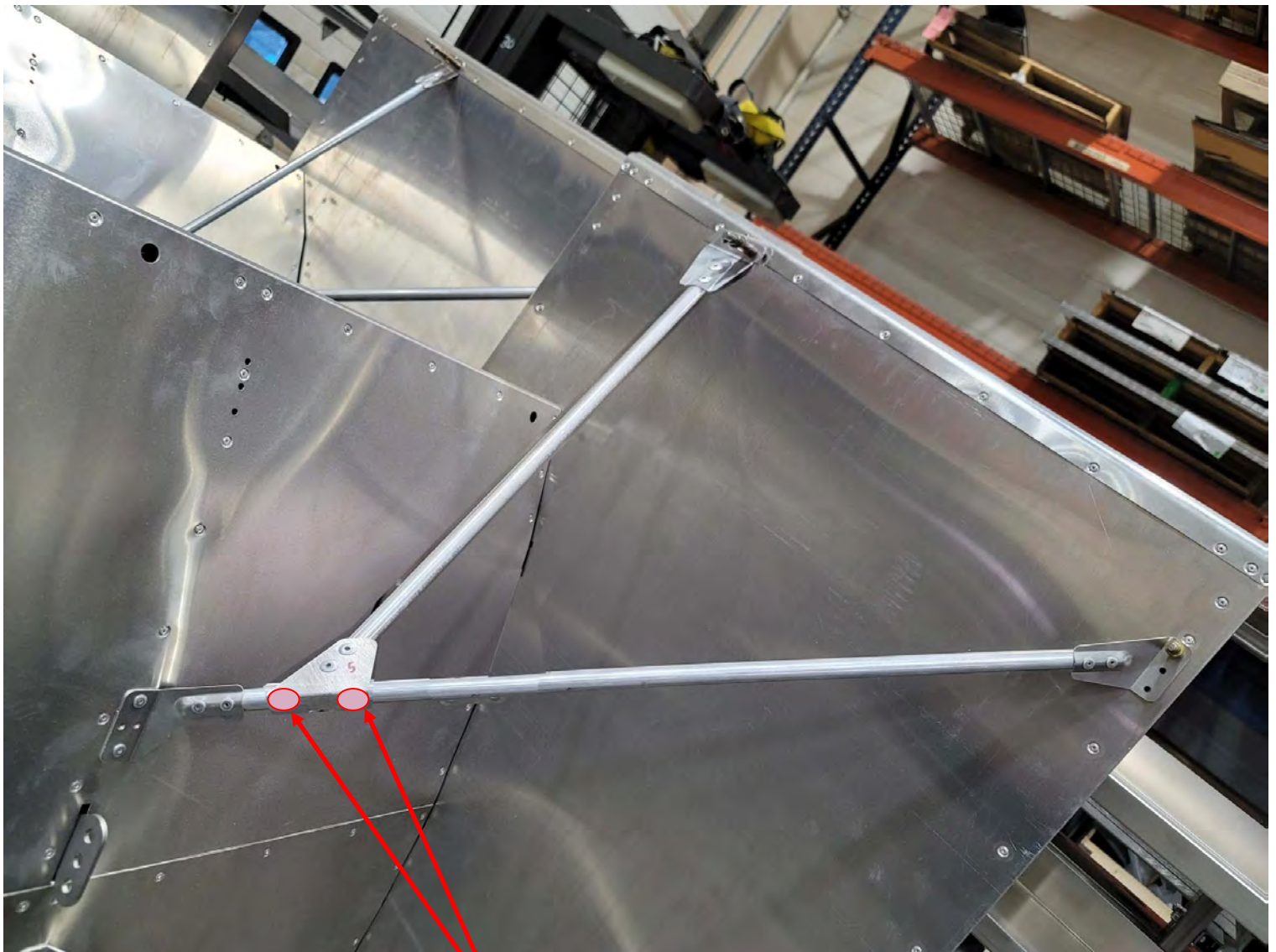
NOTE KNOTCH TO  
FRONT

# PUTTING ON NOSE BACKER—LOCATION TO NOSE PROFILES





# RIGHT REAR BRACE LOCATION



DRILL AND RIVET  
(2) HOLES

# RIGHT HAND BOARD NOSE FILLER FOR POINTED NOSE WINGS



BEFORE INSTALLING BOARD ON CENTER SECTION RIVET IN NOSE FILLER

